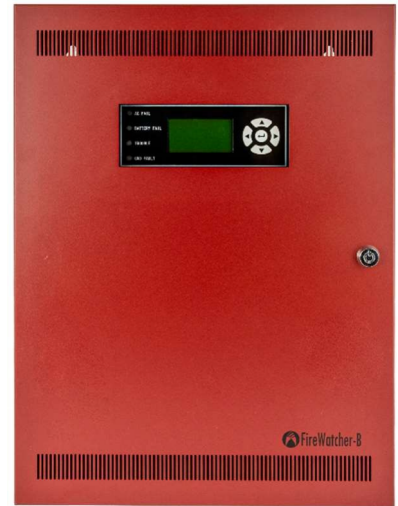




Addressable NAC Booster FW131



DESCRIPTION

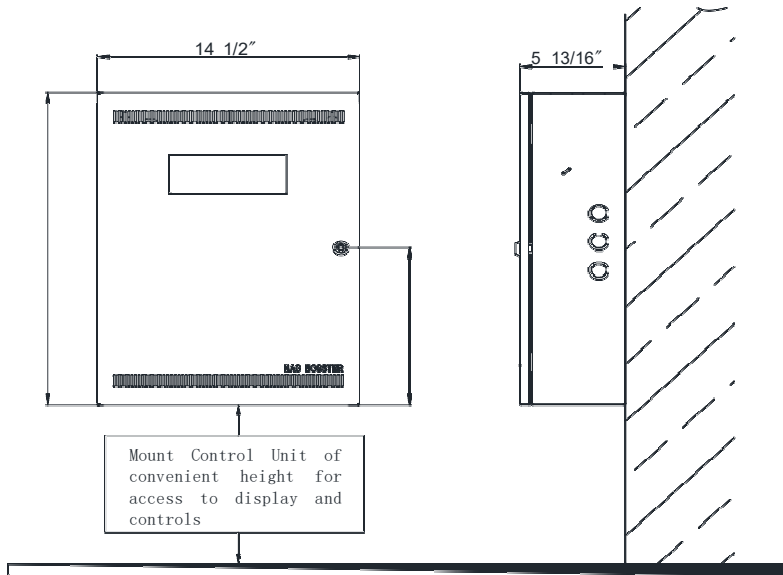
The FW131 is an Addressable NAC Booster Panel designed for small to medium-scale facilities. It is ideally suited for both new and retrofit commercial, institutional, and industrial fire detection and notification applications. FW131 is a state-of-the-art addressable fire control system that meets the requirements of UL864 10th edition and ULC S527. It supports 2 communication types: via SLC and Pass Through. It also has a capacity 8 Notification Appliance Circuits and 4 form C dry relay contacts (4 relays are used for indicating general loop/system troubles). The FW131 has a 4" LCD with 128 X 32 resolution, 4 navigation buttons and 1 enter button, and 4 LED indicators making it a highly intuitive fire alarm user interface. It will take up 9 addresses on the SLC loop.

GENERAL INFORMATION

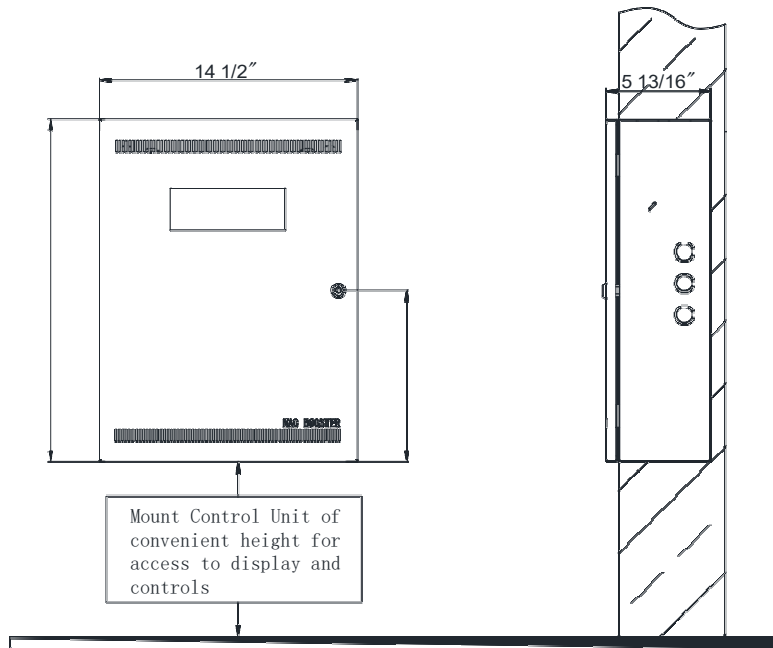
- **LCD Display**
4" LCD with 128 X 32 resolution, 4 navigation buttons and 1 "enter" button, and 4 LED indicators.
- **Flexible Outputs**
8 NACs, Class A or B, 3Amps each, independently programmable and 4 form C dry relay contacts.
- **Communication**
Supports 2 communication types: via SLC and Pass Through.

INSTALLATION

The FW131 panel must be wall-mounted as per UL and ULC standards.



Surface mounted



Flush mounted

SPECIFICATIONS

General	Digital signal processor-based design, fully configurable from the front panel with password protection
Environmental	Operating temperature: 32 - 120 °F (0 - 49 °C) Relative humidity: Up to 93% @ 90 °F (32 °C) To be installed in normal dry indoor environment only
Primary Supply	110 - 120 VAC 50Hz/60Hz (4.68A), or 220 - 240 VAC 50Hz/60H (2.6A)"
Secondary Power Supply	Two 12V 40AH max in total Two 12V 18AH max in cabinet
Power Outputs	Internal power supply for AMI User interface / display 8 NACs, Class A or B, 3A each, 10A in total, independently programmable One Non-Resettable/Resettable Auxiliary Power Output (configurable) Power limited 24 Vdc 1Amp max. Class E. 0.35 power factor
Relays Output	4 NO relay outputs (AC fail, battery fail, ground fault, general trouble), contact rating 1A @24Vdc
Communication	SLC - Class A & B, take 9 addresses on SLC Pass Through - Class A & B, 2 inputs configurable
LED	4 (AC fail, battery fail, ground fault, general trouble)

CATALOG NUMBER TO ORDER

Model	Description
FW131	Red color NAC Booster 8 NAC, 1 PCU, Enclosure, Door with pictogram silkscreen
FW390	Power-supply and Charger Unit (PCU)
FWPK	Key for Fire Alarm Control Panel and Remote Annunciator
FW421	End Of Line 10K resistor (EOLR)
FW422	End Of Line Plate (EOLP)